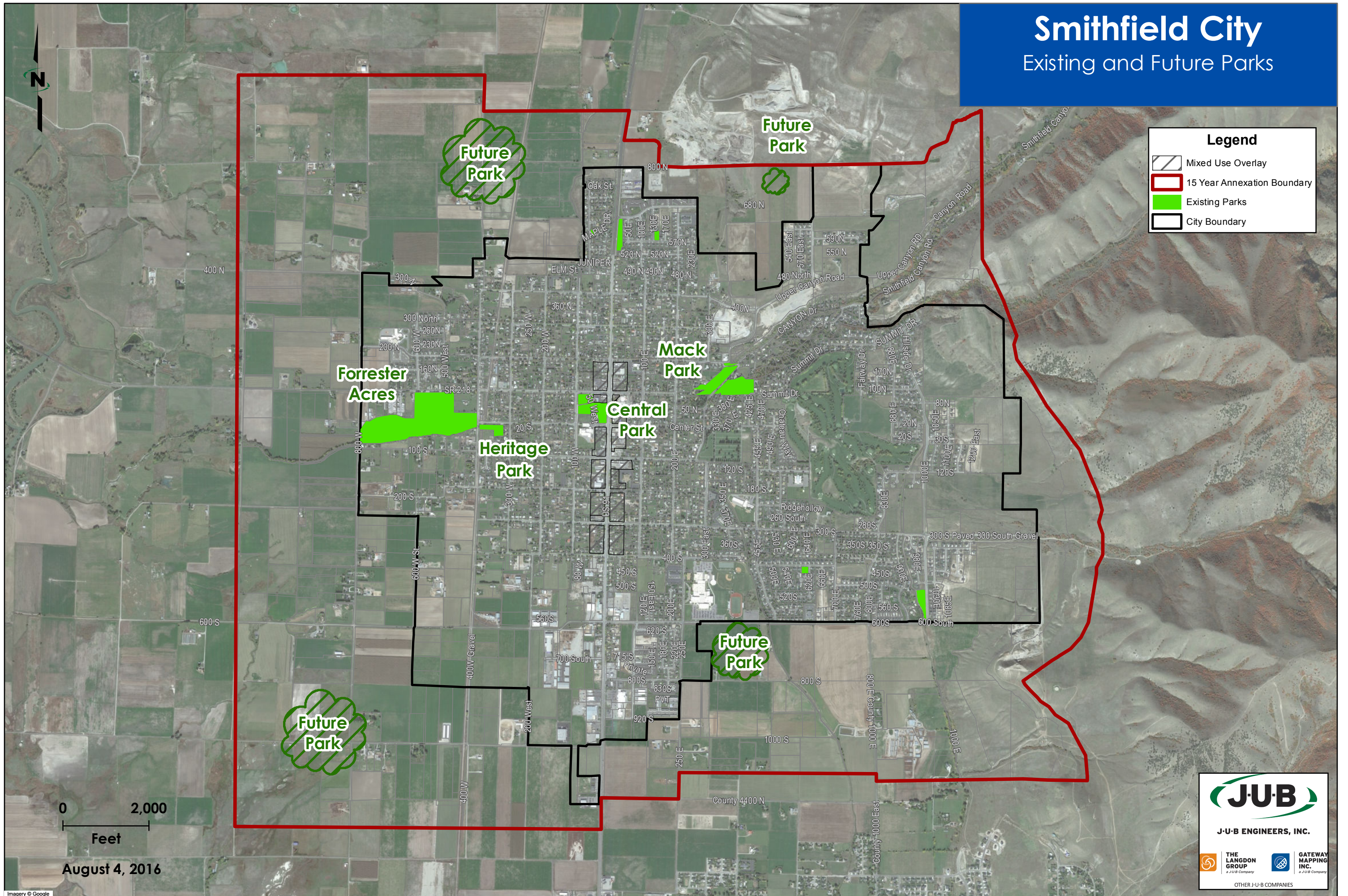

Attachment 1

Existing and Future Parks Map

Smithfield City

Existing and Future Parks



Legend

- Mixed Use Overlay
- 15 Year Annexation Boundary
- Existing Parks
- City Boundary

0 2,000
Feet

August 4, 2016

J·U·B
J·U·B ENGINEERS, INC.

THE LANGDON GROUP
a J·U·B Company

GATEWAY MAPPING INC.
a J·U·B Company

OTHER J·U·B COMPANIES

A decorative horizontal band with a diagonal hatching pattern, consisting of thin, parallel lines slanted from the top-left to the bottom-right. The text is centered within this band.

Attachment 2

Existing and Future Trails Map



Attachment 3

Inventory of Existing Parks and Trails

Condition Classifications Information 1- Bad 2- Fair 3 Good	Classification	Address	Park Use	Year Developed	Acreage			
					Developed Acres	Undeveloped Acres	Detention Basin Acres	Total Acres
Mack Park	Neighborhood	50 N. 300 E.	Pic, Volleyball	1934	4.8	1.8		6.6
Central Park	Neighborhood	50 W. 100 N.	Pic, Sports	1920	6.3	1.7		8
Heritage Park	Neighborhood	350/360 W. Center	Weddings, pic.	2003-2006	2.5			
Forrester Acres	Community	450 W. 100 N.	Sports, Rec,Pic.	1953 to 2016	42.5	4	1.5	4.8
Sunset Park	Neighborhood	500 S. 1000 E.	Play ground, pic.	2015	2.6		2	2.6
East Sky View	Mini-park	620 E. 420 S.	Play ground, pic.	2009	0.6	Under Ground .6		0.6
Hunter Meadows	Mini-park	570 N. 130 E.	Play ground, pic.	2010	0.6			0.6
East Retention Park	Mini-park	630 N. Main	Recreation	2011	1.8		1.8	1.8
Kids Corner	Mini-park	Wasatch - Maple	Play ground, pic.	1975	0.6			0.6
Heritage Trail	Regional Trail	Through Town	Walking, biking	2001				
Nature Trail	Community	380 E. Canyon	Walking	2005				
Sunset Trail	Regional Trail	500 E. Center	Walking	2004				
Civic Center	Indoor Facility							
Youth Center	Indoor Facility							
Rec Center	Indoor Facility							

Condition Classifications Information 1- Bad 2- Fair 3 Good	Baseball Field		Baseball Field Lights		Softball Field		Softball Field Lights		Basketball Court	
	Count	Condition	Count	Condition	Count	Condition	Count	Condition	Count	Condition
Mack Park										
Central Park										
Heritage Park										
Forrester Acres	2	3	1	3	2	3	2	3		
Sunset Park										
East Sky View										
Hunter Meadows										
East Retention Park										
Kids Corner									1	3
Heritage Trail										
Nature Trail										
Sunset Trail										
Civic Center										
Youth Center										
Rec Center										

Condition Classifications Information 1- Bad 2- Fair 3 Good	Basketball Court Lights		BBQ		Bench		Bleachers (movable)		Bleachers (fixed)		Pavilion, Small (1 Table)	
	Count	Condition	Count	Condition	Count	Condition	Count	Condition	Count	Condition	Count	Condition
Mack Park					12	3						
Central Park			3	3	10	3	2	3				
Heritage Park					7	3						
Forrester Acres					9	3	18	3	1	3	2	3
Sunset Park					3	3						
East Sky View					2	3						
Hunter Meadows					2	3						
East Retention Park												
Kids Corner					2	3						
Heritage Trail												
Nature Trail												
Sunset Trail												
Civic Center												
Youth Center												
Rec Center												

Condition Classifications Information 1- Bad 2- Fair 3 Good	Pavilion, Medium (2 - 9 Tables)		Pavilion, Large (10 Tables +)		Concession Stand(s)		Designated Football Field		Designated Football Field Lights		Designated Soccer Field	
	Count	Condition	Count	Condition	Count	Condition	Count	Condition	Count	Condition	Count	Condition
Mack Park			2	3								
Central Park			1	3								
Heritage Park												
Forrester Acres					4	3	1	3			1	3
Sunset Park												
East Sky View	1	3										
Hunter Meadows	1	3										
East Retention Park												
Kids Corner												
Heritage Trail												
Nature Trail												
Sunset Trail												
Civic Center												
Youth Center												
Rec Center												

Condition Classifications Information 1- Bad 2- Fair 3 Good	Designated Soccer Field Lights		Drinking Fountain		Fencing		Fire Pit or Fireplace		Flag Pole		Frisbee Golf Course	
	Count	Condition	Count	Condition	Type	Condition	Count	Condition	Count	Condition	Count	Condition
Mack Park			2	2	Wood Plan	3	3	3				
Central Park					Chain Link	3			1	3		
Heritage Park					Vinyl	3						
Forrester Acres			5	3	Chain Link	3			1	3		
Sunset Park												
East Sky View			1	3	Vinyl	3						
Hunter Meadows			1	3	Vinyl	3						
East Retention Park												
Kids Corner					Chain/Vinyl	3						
Heritage Trail												
Nature Trail												
Sunset Trail					Chain/Vinyl	3						
Civic Center												
Youth Center												
Rec Center												

Condition Classifications Information 1- Bad 2- Fair 3 Good	Community Garden		Specialized Garden		Historical Marker		Horseshoe Pit		Information Kiosk		Interactive Fountain	
	Count	Condition	Count	Condition	Count	Condition	Count	Condition	Count	Condition	Count	Condition
Mack Park							4	3				
Central Park					3	3	4	3	1	3		
Heritage Park					1	3						
Forrester Acres												
Sunset Park												
East Sky View												
Hunter Meadows												
East Retention Park												
Kids Corner												
Heritage Trail												
Nature Trail					1	3						
Sunset Trail												
Civic Center												
Youth Center												
Rec Center												

Condition Classifications Information 1- Bad 2- Fair 3 Good	Irrigation System				Meeting Room		Equipment Storage Room		Multi-Use Field			Multi-Use Field Lights	
	(Yes/No)	(Automatic/ Manual)	Condition	Age	Count	Condition	Count	Condition	Count	Condition	Acres	Count	Condition
Mack Park	Y	A	3	40			1	3					
Central Park	Y	A	3	40					1	3			
Heritage Park	Y	A	3	13									
Forrester Acres	Y	A	3	30yr.to current			8	3					
Sunset Park	Y	A	3	1					1	3	2.6		
East Sky View	Y	A	3	7									
Hunter Meadows	Y	A	3	6									
East Retention Park													
Kids Corner	Y	A	3	41									
Heritage Trail	Y	A	3	15									
Nature Trail	Y	A	3	11									
Sunset Trail	Y	A	3	12									
Civic Center													
Youth Center													
Rec Center													

Condition Classifications Information 1- Bad 2- Fair 3 Good	Need for Tree Replacement Schedule	Park Sign		On-Street Parking (number of stalls)		Off-Street Parking (number of stalls)		Picnic Table		Large Playground (>25 kids)		Small Playground (<25 kids)	
		Count	Condition	Count	Pavement Condition	Count	Condition	Count	Condition	Count	Condition	Count	Condition
Mack Park	Y	3	3			83	3	30	3	2	3		
Central Park	Y	1	3	22	3	44	3	15	3	1	3		
Heritage Park	Y			6	3	7	3	1	3				
Forrester Acres	Y	2	2	75	3	220	2	2	2	1	3		
Sunset Park	Y			25	3					1	3		
East Sky View	Y	1	3	12	3			8	3	1	3		
Hunter Meadows	Y			12	3			8	3	1	3		
East Retention Park													
Kids Corner	Y	1	3	15	3					1	3		
Heritage Trail	Y	15	3										
Nature Trail	Y	1	3			6	3						
Sunset Trail	Y												
Civic Center													
Youth Center													
Rec Center													

Condition Classifications Information 1- Bad 2- Fair 3 Good	Portable Soccer Goals for Temporary Fields		Portable T-Ball for Temporary Fields		Restrooms		Scorekeeper's Tower		Skate Park		Specialized Bowery i.e. gazebo, bandstand	
	Count	Condition	Count	Condition	Count	Condition	Count	Condition	Count	Condition	Count	Condition
Mack Park					1	2					1	3
Central Park	4	3			1	1	1	3				
Heritage Park											1	3
Forrester Acres	8	3	2	3	4	1	6	3				
Sunset Park												
East Sky View											1	3
Hunter Meadows											1	3
East Retention Park												
Kids Corner												
Heritage Trail												
Nature Trail												
Sunset Trail												
Civic Center												
Youth Center												
Rec Center												

Condition Classifications Information 1- Bad 2- Fair 3 Good	Splash Pad		Swimming Pool		Swings		Tennis Court		Tennis Court Lights		Trail Head		Trash Receptacle	
	Count	Condition	Count	Condition	Count	Condition	Count	Condition	Count	Condition	Count	Condition	Count	Condition
Mack Park					2	3					1	3	16	3
Central Park											2	3	7	3
Heritage Park											1	3	1	3
Forrester Acres													39	3
Sunset Park													1	3
East Sky View					4	3							2	3
Hunter Meadows													2	3
East Retention Park														
Kids Corner					2	3							1	3
Heritage Trail														
Nature Trail														
Sunset Trail														
Civic Center														
Youth Center														
Rec Center														

Condition Classifications Information 1- Bad 2- Fair 3 Good	Volleyball Court (paved)		Volleyball Court (sand)		Volleyball Court Lights		Walking Paths and Trails Within the Park		Youth Baseball Field		Youth Field Lights	
	Count	Condition	Count	Condition	Count	Condition	Length	Condition	Count	Condition	Count	Condition
Mack Park			1	3			1600'	3				
Central Park			1	3			350'	3				
Heritage Park							1800'	3				
Forrester Acres							4300'	3				
Sunset Park							2550	3				
East Sky View												
Hunter Meadows												
East Retention Park												
Kids Corner												
Heritage Trail							14,850'	3				
Nature Trail							1150'	3				
Sunset Trail							4250'	2				
Civic Center												
Youth Center												
Rec Center												

Condition Classifications Information 1- Bad 2- Fair 3 Good	Other (specify)		Other (specify)		Other (specify)	
	Amenity Name/Type	Condition	Amenity Name/Type	Condition	Amenity Name/Type	Condition
Mack Park	River	3	Preservation Board	3		
Central Park	River - Flower Beds	3	Preservation Board	3	Christmas Lights	3
Heritage Park	Historical Cabin	2	River Bridge	3	River	3
Forrester Acres	Horse Arena & Track	3	Batting Cages, Dug out, Practice Pitcher	3	Memorial Monuments	3
Sunset Park						
East Sky View						
Hunter Meadows						
East Retention Park						
Kids Corner						
Heritage Trail						
Nature Trail	Memorial Trees	3	River Bridge	3		
Sunset Trail						
Civic Center						
Youth Center						
Rec Center						

Park Name: Central Park **Park Address: 50 West 100 North**

Size: 8 Acres **Classification: Neighborhood**
Detention: None **Over All Condition: Good** **Year Built: 1920**

Amenities

Item	Count	Condition
BBQ	3	Fair
Bench	10	Good
Bleachers	2	Fair
Pavilion Large	1	Bad
Fence	Chain Link	Fair
Flag Pole	1	Fair
Historical Marker	3	Good
Horseshoe Pit	4	Fair
Information Kiosk	1	Good
Irrigation System	40 Years old	Fair
Multi-Use Field	1	Good
Park Sign	1	Good
On-Street Parking	22	Good
Off-Street Parking	44	Good
Picnic Tables	30	Good
Large Playground	1	Fair
Portable Soccer Goals	4	Good
Restrooms	1	Bad
Scorekeeper's Tower	1	Fair
Trail Head	1	Good
Trash Receptacle	7	Fair
Volleyball Court	1	Fair
Walking Path	350 Feet	Good
River and Flower Beds	Specialty Item	Good
Christmas Lighting	Specialty Item	Good

Future Needs

Update or rebuild the restrooms
 Cement border around the volleyball area
 Sprinkler system on the north side
 Splash Pad
 Skate Park
 Redo curbing and sidewalk
 Update pavilion
 Purchase new picnic tables
 Plant additional trees
 New park sign
 Replace and enlarge river bridge
 Resurface playgrounds
 Parking lot update
 Update bleachers
 Update trash receptacles and lids
 Update drinking fountains
 Information board

Park Name: Forrester Acres		Park Address: 450 West 100 North
Size: 48 Acres		Classification: Community
Detention: Yes 1.5 Acres	Over All Condition: Good	Year Built: 1953- 2016
Amenities		
Item	Count	Condition
Baseball Field	2	Good
Baseball Field Lights	1	Good
Softball Field Lights	2	Fair
Bench	9	Good
Bleachers Movable	18	Good
Bleachers Fixed	1	Fair
Pavilion Small	2	Fair
Concession Stands	4	Bad (Except for New Blue Socks)
Football Field	1	Good
Soccer Field Designated	1	Good
Drinking Fountains	5	Fair
Fence	Chain Link	Bad to Fair Needs work
Flag Pole	1	Good
Irrigation System	30 or Less Years Old	Good
Equipment Room	8	Fair
Park Sign	2	Fair
On-Street Parking	75	Good
Off-Street Parking	220	Fair
Picnic Tables	2	Bad
Large Playground	1	Fair
Portable Soccer Goals	8	Good
Portable T-Ball	2	Good
Restrooms	4	Bad
Scorekeeper's Tower	6	Good
Trash Receptacle	39	Fair
Walking Path	.81 Mile	Good
Horse Arena and Track		Good
Batting Cages		Good
Memorial Monument		Good
Future Needs		
Update or rebuild the 3 restrooms Build pavilions and add tables New park signs Modify sprinkling system Modify culinary connections Replace homerun fence line throughout the park Update backstop behind Blue Socks Add new parking lot Plant additional trees Add additional bike racks Expand the park in undeveloped area Resurface playgrounds Install entrance gate, park sign, information board at the horse arena Update trash receptacles and lids Information board		

Park Name: Heritage Park		Park Address: 350 West Center Street	
Size: 2 Acres		Classification: Neighborhood	
Detention: None		Over All Condition: Good	
Year Built:2003			
Amenities			
Item	Count	Condition	
Bench	7	Good	
Fence	Vinyl Privacy	Good	
Historical Marker	1	Good	
Irrigation System	13 Years Old	Good	
Specialized Bowery	1	Good	
Off-Street Parking	7	Good	
Picnic Tables	1	Good	
Picnic Tables	1	Bad/Needs Updating	
Trail Head	1	Good	
Trash Receptacle	1	Fair	
Historical Cabin	1	Fair	
River Bridge	1	Good	
Walking Path	.34 mile	Good	
Future Needs			
Park Sign			
Purchase moveable Stage for City events			
Update Pavilion/bandstand			
Update trash receptacles and lids			

Park Name: Mack Park		Park Address: 50 North 300 East	
Size: 6.6 Acres		Classification: Neighborhood	
Detention: None			
Amenities			
Item	Count	Condition	
Bench	12	Good	
Pavilion Large	2	Fair	
Drinking Fountain	2	Fair	
Fencing	Wood Plank	Good	
Fire Pit	3	Fair	
Horseshoe Pit	4	Fair	
Irrigation System	40 years old	Good	
Equipment Storage Room	1	Good	
Park Sign	3	Good	
Off-Street Parking	83	Good	
Picnic Tables	30	Good for most/need replacement	
Large Playground	2	Fair	
Restrooms	1	Bad	
Swings	2	Good	
Trail Head	1	Good	
Trash Receptacle	16	Fair	
Volleyball Court Sand	1	Good	
Trail Bridge	1	Bad	
River through the park			
Walking Path in the Park	.3 mile	Good	
Future Needs			
Rebuild the bridge Remove large trees Develop area west of Mack Park Resurface playgrounds Update Restrooms Expand concrete around the pavilions Update Pavilions Update picnic tables and benches Add a welcome sign and information kiosk Add additional pavilion on the west end of the park Replace walking bridge Update trash receptacles and lids			

Park Name: Sunset Park		Park Address: 500 South 1000 East	
Size: 2.6 Acres		Classification: Neighborhood	
Detention: Yes 2 Acres		Over All Condition: Good	
Year Built: 2015			
Amenities			
Item	Count	Condition	
Bench	3	Good	
Irrigation System	1 Year Old	Good	
Multi-Use Field	1 - 2.6 Acres	Good	
On-Street Parking	25	Good	
Large Playground	1	Good	
Trash Receptacle	1	Good	
Walking Path	.48 Miles	Good	
Future Needs			
Build restrooms Build pavilion Purchase new picnic tables Plant additional trees Update trash receptacles and lids Resurface playgrounds Add swing sets			

Trail Name: Heritage Trail		Trail Location: From Forrester Acres Park to Mack Park	
Length: 2.9 Miles		Classification: Regional	
Over All Condition: Good		Year Built:2001	
Amenities			
Item	Count	Condition	
Irrigation System	15 Year Old	Good	
Trail Signs	15	Good	
Connects Four Parks			

Trail Name: Nature Trail		Trail Location: 380 East Canyon	
Length: .2 Miles		Classification: Regional	
Use: Multi-use		Over All Condition: Good	Year Built: 2005
Amenities			
Item	Count	Condition	
Irrigation System	11 Years Old	Good	
Trail Signs	1	Good	
Off-Street Parking	6	Good	
Memorial Trees	?	Good	
River Bridge	1	Good	
Historical Marker	1	Good	

Trail Name: Sunset Trail		Trail Location: 380 East Canyon	
Length: .80 Mile		Classification: Regional	
Use: Multi-use	Over All Condition: Good	Year Built: 2004	
Amenities			
Item	Count	Condition	
Fencing	Vinyl	Good	
Irrigation	12 Years old	Good	

Park Future Needs

East Sky View Park

Resurface playgrounds
Update pavilion
Update trash receptacles and lids

Kids Corner

Resurface playgrounds
New basketball hoops
New picnic tables
Update trash receptacles and lids

Hunter Meadows

Resurface playgrounds
Update pavilion
Park Sign
Update trash receptacles and lids

East Retention

Add picnic tables, benches, and trash receptacles
Park sign
Plant trees

Trail Future Needs

Standardized trail signs
Additional benches
Rebuild areas where narrow sidewalks are used as part of the trail system to a standardized wider asphalt trails



Attachment 4

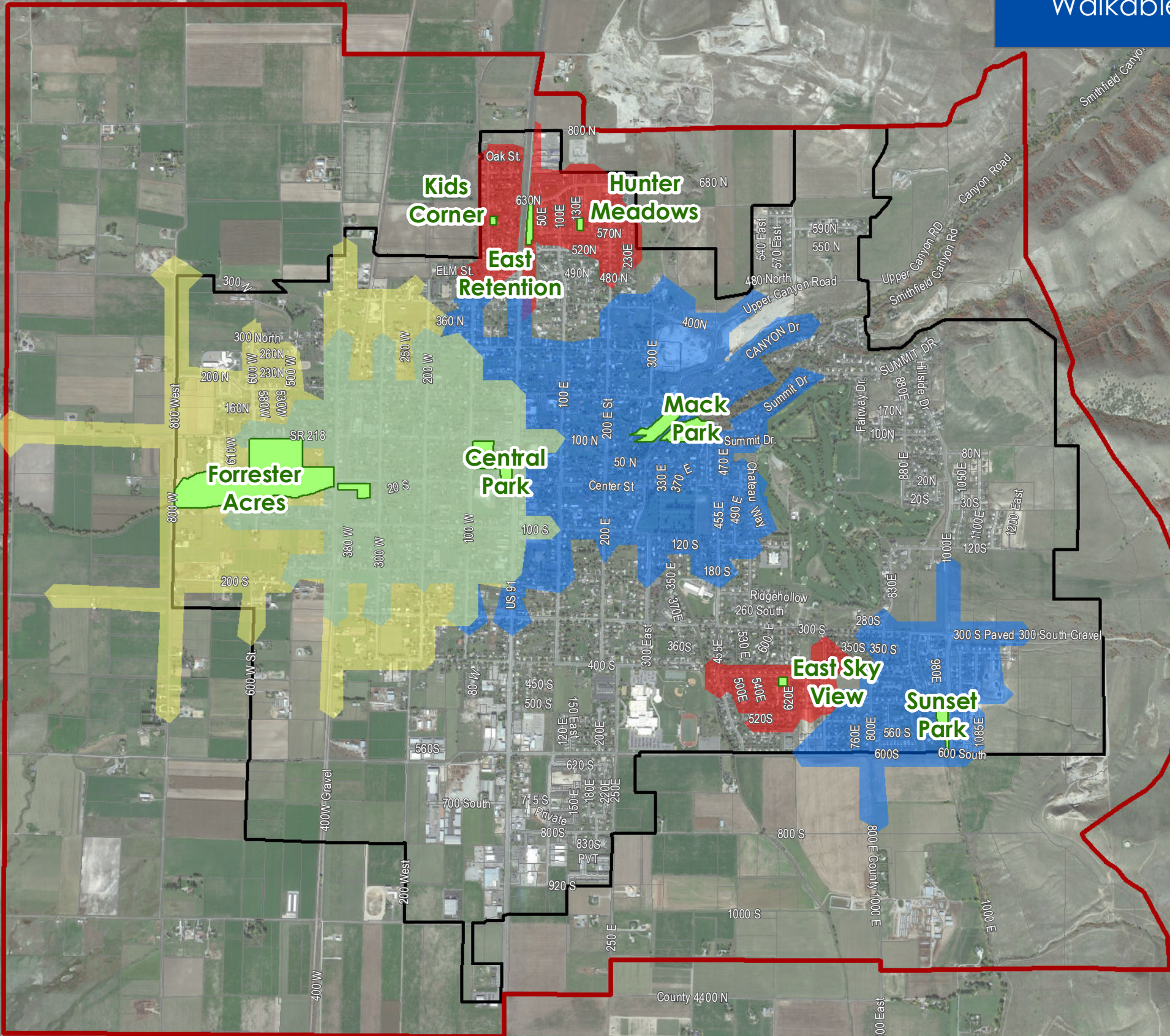
Walkable Park Access Map

Smithfield City

Walkable Park Access Areas

Legend

- Parks
- Community Park Service Areas (3/4 mile walking distance)
- Neighborhood Park Service Areas (1/2 mile walking distance)
- Mini Park Service Areas (1/4 mile walking distance)
- 15 Year Annexation Boundary
- City Boundary



0 2,000
Feet

August 18, 2016

J·U·B
J·U·B ENGINEERS, INC.

 THE LANGDON GROUP
 GATEWAY MAPPING INC.

OTHER J·U·B COMPANIES



Attachment 5

Existing and Future Parks with
Walkable Access Map

Smithfield City

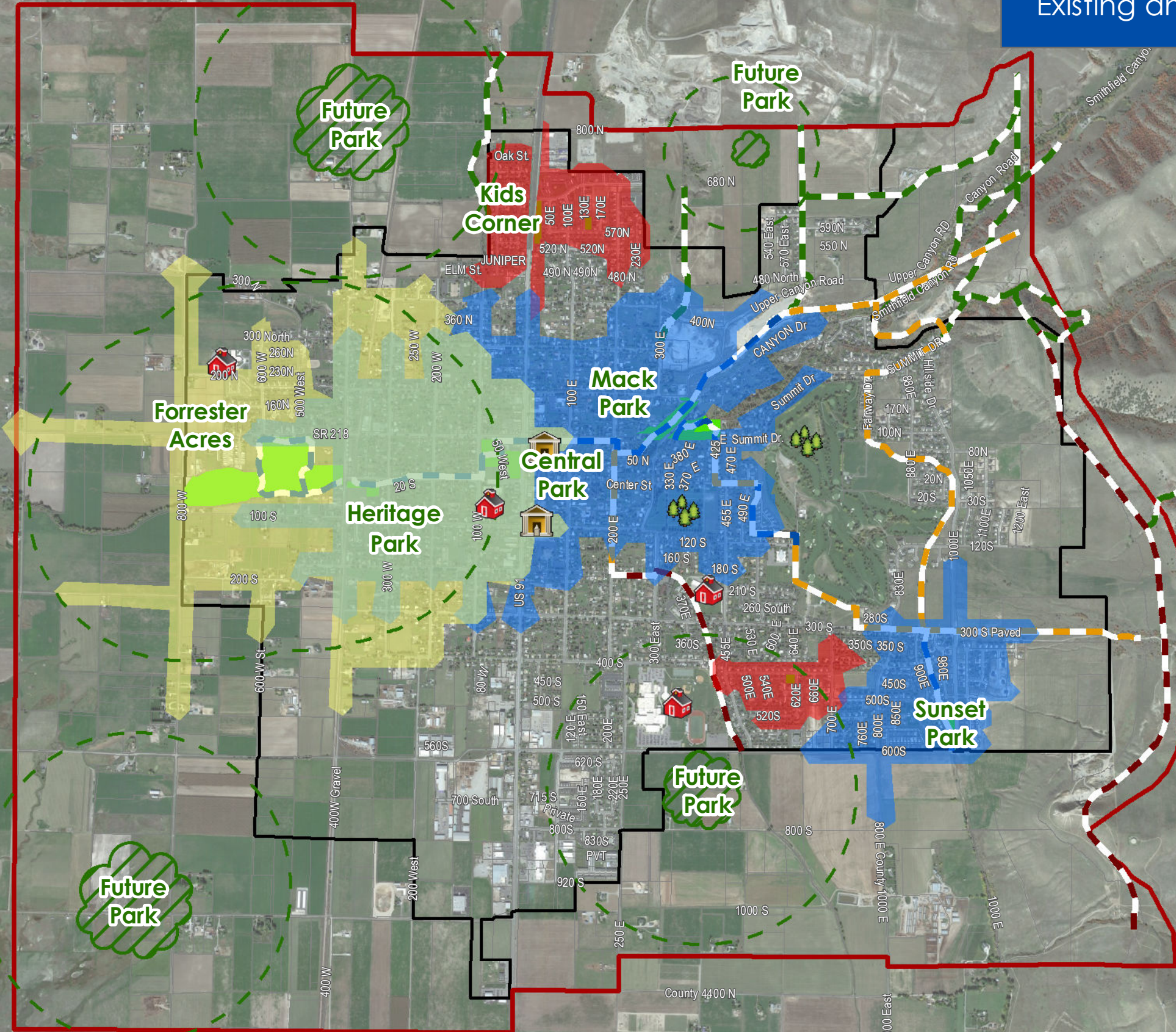
Existing and Future Parks & Trails

Legend

- Community Park Service Areas (3/4 mile walking distance)
- Neighborhood Park Service Areas (1/2 mile walking distance)
- Mini Park Service Areas (1/4 mile walking distance)

Trails

- Existing
- Existing Canyon
- Future
- Non City-Owned
- 15 Year Annexation Boundary
- Existing Parks
- Future Parks
- Future Park Service Areas
- City Boundary



August 18, 2016

J·U·B
J·U·B ENGINEERS, INC.

THE LANGDON GROUP
a J·U·B Company

GATEWAY MAPPING INC.
a J·U·B Company

OTHER J·U·B COMPANIES

Imagery © Google